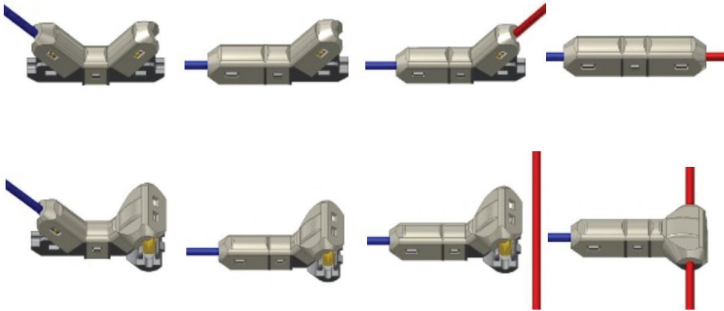


Schneid-Klemm-Verbinder



I-1

Wire range: 0,2-0,5mm²
 Max Voltage rating: 600 V
 Impulse withstand voltage: 1,8kv
 Operating Temperature: -40~80
 Maximum Current EN (A) : 3A



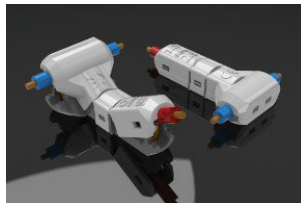
I-2

Wire range: 0,75-1,0mm²
 Max Voltage rating: 600 V
 Impulse withstand voltage: 6kv
 Operating Temperature: -40~80
 Maximum Current EN (A) : 10A



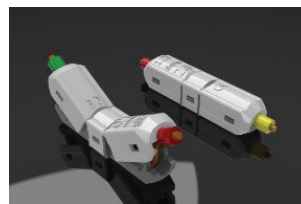
I-3

Wire range: 1,5mm²
 Max Voltage rating: 600 V
 Impulse withstand voltage: 9kv
 Operating Temperature: -40~80
 Maximum Current EN (A) : 15A



I-4

Wire range: 2,5mm²
 Max Voltage rating: 600 V
 Impulse withstand voltage: 12kv
 Operating Temperature: -40~80
 Maximum Current EN (A) : 20A



I-5

Wire range: 4,0mm²
 Max Voltage rating: 600 V
 Impulse withstand voltage: 18kv
 Operating Temperature: -40~80
 Maximum Current EN (A) : 30A

T-1

Wire range: 0,2-0,5mm²
 Max Voltage rating: 600 V
 Impulse withstand voltage: 1,8kv
 Operating Temperature: -40~80
 Maximum Current EN (A) : 3A

T-2

Wire range: 0,75-1,0mm²
 Max Voltage rating: 600 V
 Impulse withstand voltage: 6kv
 Operating Temperature: -40~80
 Maximum Current EN (A) : 10A

T-3

Wire range: 1,5mm²
 Max Voltage rating: 600 V
 Impulse withstand voltage: 9kv
 Operating Temperature: -40~80
 Maximum Current EN (A) : 15A

T-4

Wire range: 2,5²
 Max Voltage rating: 600 V
 Impulse withstand voltage: 12kv
 Operating Temperature: -40~80
 Maximum Current EN (A) : 20A

T-5

Wire range: 4,0mm²
 Max Voltage rating: 600 V
 Impulse withstand voltage: 18kv
 Operating Temperature: -40~80
 Maximum Current EN (A) : 30A